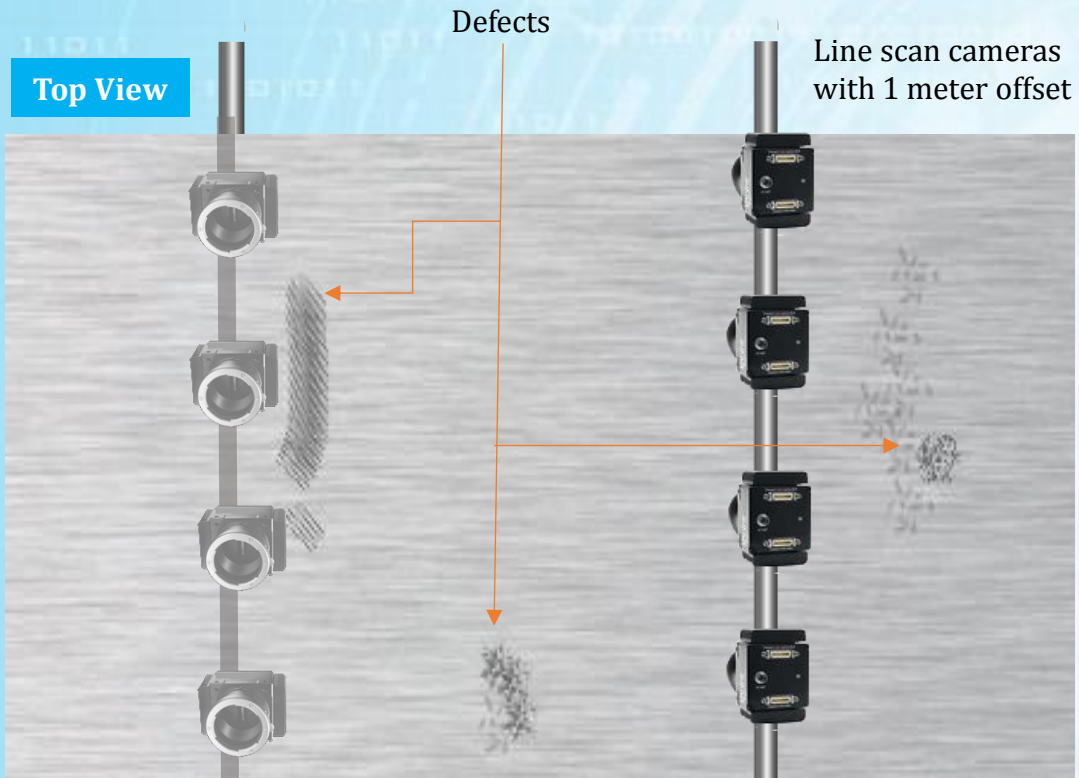


Total Inspection of Steel and Aluminum



Eight cameras with 1 meter offset used for analysis of defects in manufacturing metals.

Long term visual recording (24 hours) was logged by custom software to create a visual map of defects in the material.

This allowed for identification of visual defects and their location at fast linear rates on the hot rolled steel and aluminum.

View 2

Cameras above and below sheet of hot rolled steel

