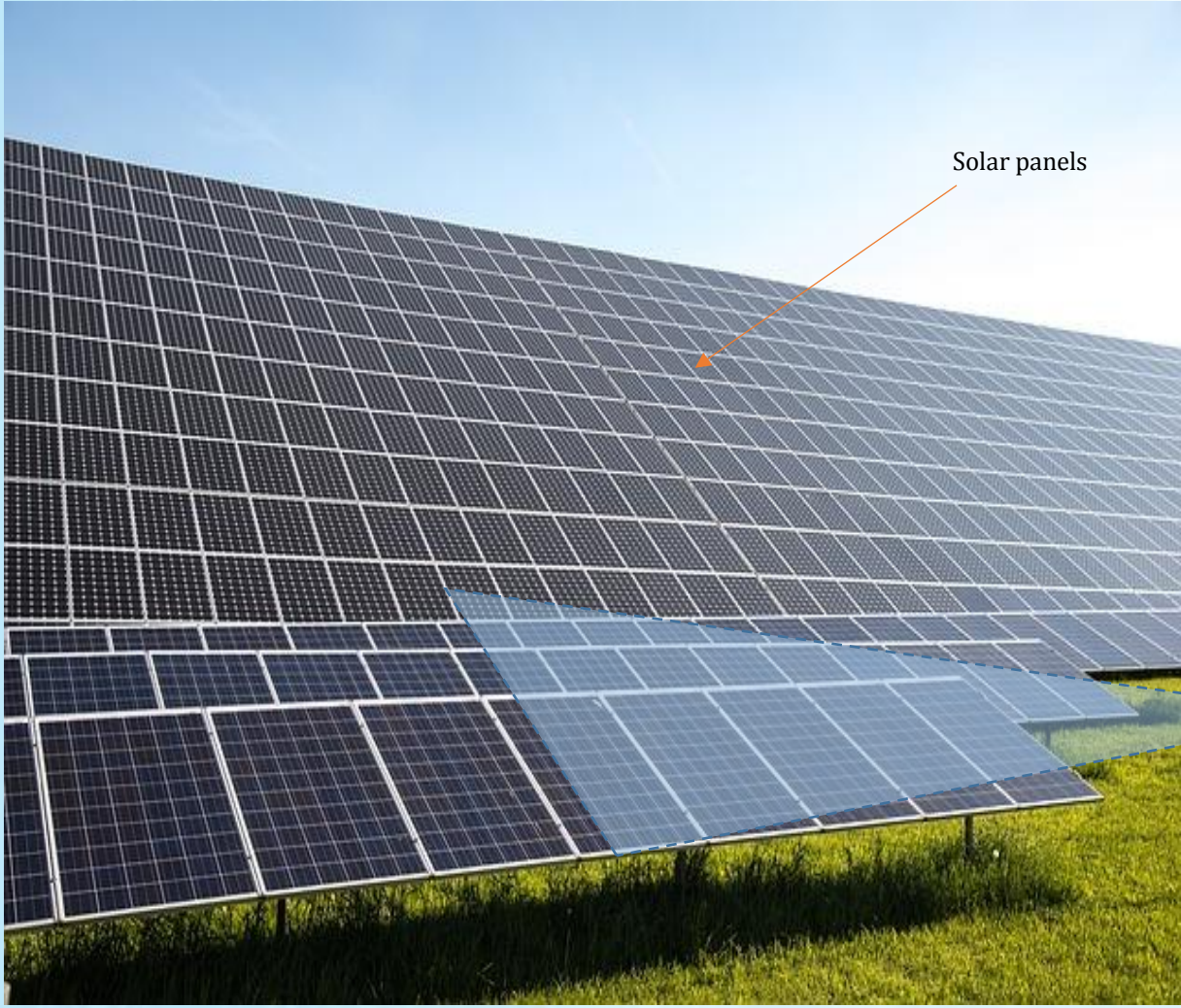


Solar Panel Inspection



Solar panels

A solar farm has thousands of solar panels. Each must be inspected for defects and faults to ensure efficiency. Additionally, if defects are found early, the panels may still be covered by manufacturer's warranty which cuts down repair costs.



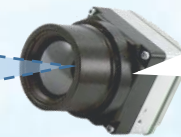
Solution:

An infrared camera is used to inspect the solar panels.

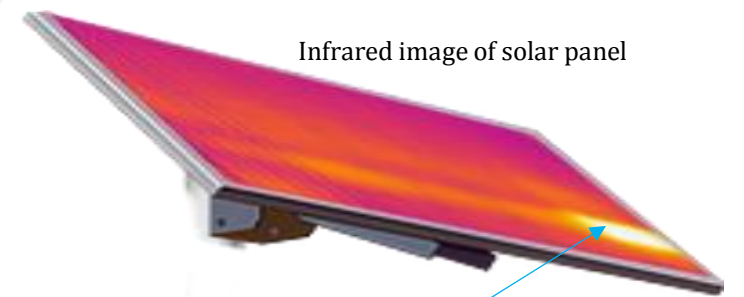
The solar panel is made up of solar cells. If a solar cell produces more heat, it is likely to produce less electricity (the energy is being expended in the form of heat). The IR camera can identify these hot spots and easily spot the ineffective cells.

The hot spots appear bright red to white, while the efficient areas appear purple.

The solar panel inspector can easily locate, repair, or replace the defective solar cells



IR camera



Infrared image of solar panel

Defective solar cell