

LTCLCR048-G

Telecentric CORE illuminator, beam diameter 45 mm, green

SPECIFICATIONS

Optical specifications

Beam diameter	(mm)	60
Working distance range	(mm)	90 - 180
Light color, peak wavelength (5)		green, 520 nm

Electrical specifications

Device power ratings

DC voltage minimum(1)	(V)	12
DC voltage maximum(1)	(V)	24
Power consumption	(W)	< 2.5
Max LED forward current (2)	(mA)	350

LED power ratings

Forward voltage (typical) (3)	(V)	3.3
Forward voltage (max) (3)	(V)	4.00
Max pulse current (4)	(mA)	2000

Mechanical specifications

A	(mm)	77
B	(mm)	106
C (6)	(mm)	162
Mass	(g)	1019

Compatible telecentric lenses

Compatibility	TCCRxx048, CMHOCR048, CMPTCR048, TCCR2M048-x, TCCR4M048-x, TCxx048, TCxMHR048-x, TC16M048, TC16M048-Q
---------------	---

NOTES

1. Tolerance $\pm 10\%$
2. Used in continuous (not pulsed) mode.
3. At max forward current. Tolerance is $\pm 0.06V$ on forward voltage measurements.
4. At pulse width ≤ 10 ms, duty cycle $\leq 10\%$ condition. Built-in electronics board must be bypassed (see tech info).
5. Opto Engineering recommends green light for high precision measurement applications.
6. Nominal value, with no spacers in place.

COMPATIBLE PRODUCTS



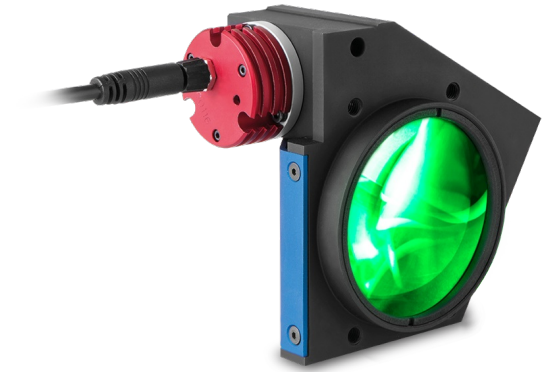
TC series
Bi-telecentric lenses for matrix detectors up to 2/3"

TC13048	Bi-telecentric lens for 1/3" detectors, magnification 0.098 x, C-mount
TC12048	Bi-telecentric lens for 1/2" detectors, magnification 0.134 x, C-mount
TC23048	Bi-telecentric lens for 2/3" detectors, magnification 0.184 x, C-mount



TC2MHR and TC4MHR series
High resolution telecentric lenses for large detectors up to 1.2"

TC2MHR048-C	High resolution telecentric lens for 1" detectors, magnification 0.268x, C-mount
-------------	--



TC2MHR048-F	High resolution telecentric lens for 1" detectors, magnification 0.268x, F-mount
TC2MHR048-E	High resolution telecentric lens for 1" detectors, magnification 0.268x, mount M42X1 FD=16
TC4MHR048-C	High resolution telecentric lens for 1.2" detectors, magnification 0.369x, C-mount
TC4MHR048-F	High resolution telecentric lens for 1.2" detectors, magnification 0.369x, F-mount
TC4MHR048-E	High resolution telecentric lens for 1.2" detectors, magnification 0.369x, mount M42X1 FD=16



TC16M series
Telecentric lenses for 35 mm and 4k/8k linescan cameras

TC16M048	Telecentric lens for 35 mm detectors, magnification 0.751 x, F-mount
TC16M048-Q	Telecentric lens for 35 mm detectors, magnification 0.751 x, mount M58x0.75 FD =6.56



TC CORE series
Space saving bi-telecentric lenses

TCCR12048	Bi-telecentric CORE lens for 1/2" detectors, magnification 0.134 x, C-mount
TCCR23048	Bi-telecentric CORE lens for 2/3" detectors, magnification 0.184 x, C-mount



2MHR-TC4MHR CORE series
Space-saving high-resolution telecentric lenses

TCCR2M048-C	Telecentric CORE lens for 1" detectors, magnification 0.268 x, C-mount
TCCR2M048-E	Telecentric CORE lens for 1" detectors, magnification 0.268 x, M42x1 FD=16
TCCR4M048-C	Telecentric CORE lens for 4/3" detectors, magnification 0.369 x, C-mount
TCCR4M048-F	Telecentric CORE lens for 4/3" detectors, magnification 0.369 x, F-mount
TCCR4M048-E	Telecentric CORE lens for 4/3" detectors, magnification 0.369 x, M42x1 FD=16



TCSM series
3D bi-telecentric lenses with Scheimpflug adjustment

TCSM048	3D bi-telecentric lens with Scheimpflug adjustment
---------	--



CMHOCR series
Clamping mechanics CORE series

CMHOCR048	Clamping mechanics for CORE telecentric lenses and illuminators Ø 48mm
-----------	--



CMPTCR series
Mounting plates CORE series

CMPTCR048	Mechanical components designed for CORE telecentric lenses and illuminators Ø 48mm
-----------	--