

# LTCLCR064-W

Telecentric CORE illuminator, beam diameter 80 mm, white

## SPECIFICATIONS

### Optical specifications

|                                  |      |           |
|----------------------------------|------|-----------|
| Beam diameter                    | (mm) | 80        |
| Working distance range           | (mm) | 120 - 240 |
| Light color, peak wavelength (5) |      | white     |

### Electrical specifications

#### Device power ratings

|                             |      |       |
|-----------------------------|------|-------|
| DC voltage minimum(1)       | (V)  | 12    |
| DC voltage maximum(1)       | (V)  | 24    |
| Power consumption           | (W)  | < 2.5 |
| Max LED forward current (2) | (mA) | 350   |

#### LED power ratings

|                               |      |      |
|-------------------------------|------|------|
| Forward voltage (typical) (3) | (V)  | 2.78 |
| Forward voltage (max) (3)     | (V)  | n.a. |
| Max pulse current (4)         | (mA) | 2000 |

### Mechanical specifications

|       |      |      |
|-------|------|------|
| A     | (mm) | 101  |
| B     | (mm) | 122  |
| C (6) | (mm) | 179  |
| Mass  | (g)  | 1832 |

### Compatible telecentric lenses

|               |  |
|---------------|--|
| Compatibility | TCCRxx064, CMHOCR064, CMPTCR064, TCCR2M064-x, TCCR4M064-x, TCxx064, TCxMHR0564-x, TC16M064, TC16M064-Q, TC12K064 |
|---------------|--|

## NOTES

1. Tolerance  $\pm 10\%$
2. Used in continuous (not pulsed) mode.
3. At max forward current. Tolerance is  $\pm 0.06V$  on forward voltage measurements.
4. At pulse width  $\leq 10$  ms, duty cycle  $\leq 10\%$  condition. Built-in electronics board must be bypassed (see tech info).
5. Opto Engineering recommends green light for high precision measurement applications.
6. Nominal value, with no spacers in place.

## COMPATIBLE PRODUCTS

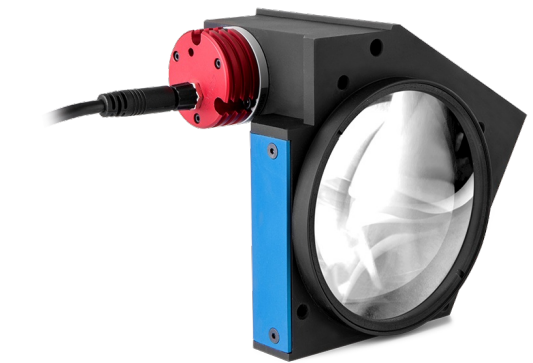


TC series  
Bi-telecentric lenses for matrix detectors up to 2/3"

|                         |  |
|-------------------------|--|
| <a href="#">TC13064</a> | Bi-telecentric lens for 1/3" detectors, magnification 0.074 x, C-mount |
| <a href="#">TC12064</a> | Bi-telecentric lens for 1/2" detectors, magnification 0.100 x, C-mount |
| <a href="#">TC23064</a> | Bi-telecentric lens for 2/3" detectors, magnification 0.138 x, C-mount |



TC2MHR and TC4MHR series  
High resolution telecentric lenses for large detectors up to 1.2"



|             |  |
|-------------|--|
| TC2MHR064-C | High resolution telecentric lens for 1" detectors, magnification 0.200x, C-mount             |
| TC2MHR064-F | High resolution telecentric lens for 1" detectors, magnification 0.200x, F-mount             |
| TC2MHR064-E | High resolution telecentric lens for 1" detectors, magnification 0.200x, mount M42X1 FD=16   |
| TC4MHR064-C | High resolution telecentric lens for 1.2" detectors, magnification 0.275x, C-mount           |
| TC4MHR064-F | High resolution telecentric lens for 1.2" detectors, magnification 0.275x, F-mount           |
| TC4MHR064-E | High resolution telecentric lens for 1.2" detectors, magnification 0.275x, mount M42X1 FD=16 |



TC16M series  
Telecentric lenses for 35 mm and 4k/8k linescan cameras

|            |   |
|------------|---|
| TC16M064   | Telecentric lens for 35 mm detectors, magnification 0.561 x, F-mount                  |
| TC16M064-Q | Telecentric lens for 35 mm detectors, magnification 0.561 x, mount M58x0.75 FD = 6.56 |



TC CORE series  
Space saving bi-telecentric lenses

|           |   |
|-----------|---|
| TCCR12064 | Bi-telecentric CORE lens for 1/2" detectors, magnification 0.100 x, C-mount |
| TCCR23064 | Bi-telecentric CORE lens for 1/2" detectors, magnification 0.100 x, C-mount |



TC2MHR-TC4MHR CORE series  
Space-saving high-resolution telecentric lenses

|             |  |
|-------------|--|
| TCCR2M064-C | Telecentric CORE lens for 1" detectors, magnification 0.200 x, C-mount       |
| TCCR2M064-E | Telecentric CORE lens for 1" detectors, magnification 0.200 x, M42x1 FD=16   |
| TCCR4M064-C | Telecentric CORE lens for 4/3" detectors, magnification 0.275 x, C-mount     |
| TCCR4M064-F | Telecentric CORE lens for 4/3" detectors, magnification 0.275 x, F-mount     |
| TCCR4M064-E | Telecentric CORE lens for 4/3" detectors, magnification 0.275 x, M42x1 FD=16 |



TCSM series  
3D bi-telecentric lenses with Scheimpflug adjustment

|         |  |
|---------|--|
| TCSM064 | 3D bi-telecentric lens with Scheimpflug adjustment |
|---------|--|



CMHOCR series  
Clamping mechanics CORE series

|           |  |
|-----------|--|
| CMHOCR064 | Clamping mechanics for CORE telecentric lenses and illuminators Ø 64mm |
|-----------|--|



CMPTCR series  
Mounting plates CORE series

|           |  |
|-----------|--|
| CMPTCR064 | Mechanical components designed for CORE telecentric lenses and illuminators Ø 64mm |
|-----------|--|