

LTCLCR096-W

Telecentric CORE illuminator, beam diameter 120 mm, white

SPECIFICATIONS

Optical specifications

Beam diameter	(mm)	120
Working distance range	(mm)	200 - 350
Light color, peak wavelength (5)		white

Electrical specifications

Device power ratings

DC voltage minimum(1)	(V)	12
DC voltage maximum(1)	(V)	24
Power consumption	(W)	< 2.5
Max LED forward current (2)	(mA)	350

LED power ratings

Forward voltage (typical) (3)	(V)	2.78
Forward voltage (max) (3)	(V)	n.a.
Max pulse current (4)	(mA)	2000

Mechanical specifications

A	(mm)	139
B	(mm)	172
C (6)	(mm)	223
Mass	(g)	4161

Compatible telecentric lenses

Compatibility	TCCRxx096, CMHOCR096, CMPTCR096, TCCR2M096-x, TCCR4M096-x, TCxx096, TCxMHR096x, TC16M096, TC16M096-Q, TC12K096
---------------	--

NOTES

1. Tolerance $\pm 10\%$
2. Used in continuous (not pulsed) mode.
3. At max forward current. Tolerance is $\pm 0.06V$ on forward voltage measurements.
4. At pulse width ≤ 10 ms, duty cycle $\leq 10\%$ condition. Built-in electronics board must be bypassed (see tech info).
5. Opto Engineering recommends green light for high precision measurement applications.
6. Nominal value, with no spacers in place.

COMPATIBLE PRODUCTS



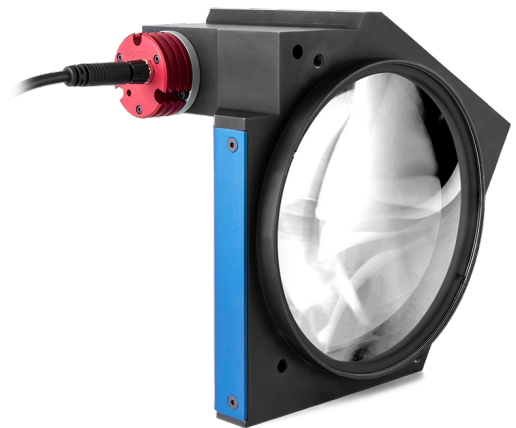
TC series
Bi-telecentric lenses for matrix detectors up to 2/3"

TC13096	Bi-telecentric lens for 1/3" detectors, magnification 0.050 x, C-mount
TC12096	Bi-telecentric lens for 1/2" detectors, magnification 0.068 x, C-mount
TC23096	Bi-telecentric lens for 2/3" detectors, magnification 0.093 x, C-mount



TC2MHR and TC4MHR series
High resolution telecentric lenses for large detectors up to 1.2"

TC2MHR096-C	High resolution telecentric lens for 1" detectors, magnification 0.137x, C-mount
-----------------------------	--



TC2MHR096-F	High resolution telecentric lens for 1" detectors, magnification 0.137x, F-mount
TC2MHR096-E	High resolution telecentric lens for 1" detectors, magnification 0.137x, mount M42X1 FD=16
TC4MHR096-C	High resolution telecentric lens for 1.2" detectors, magnification 0.186x, C-mount
TC4MHR096-F	High resolution telecentric lens for 1.2" detectors, magnification 0.186x, F-mount
TC4MHR096-E	High resolution telecentric lens for 1.2" detectors, magnification 0.186x, mount M42X1 FD=16



TC16M series
Telecentric lenses for 35 mm and 4k/8k linescan cameras

TC16M096	Telecentric lens for 35 mm detectors, magnification 0.380 x, F-mount
TC16M096-Q	Telecentric lens for 35 mm detectors, magnification 0.380 x, mount M58x0.75 FD = 6.56



TC CORE series
Space saving bi-telecentric lenses

TCCR12096	Bi-telecentric CORE lens for 1/2" detectors, magnification 0.068 x, C-mount
TCCR23096	Bi-telecentric CORE lens for 2/3" detectors, magnification 0.093 x, C-mount



TC2MHR-TC4MHR CORE series
Space-saving high-resolution telecentric lenses

TCCR2M096-C	Telecentric CORE lens for 1" detectors, magnification 0.137 x, C-mount
TCCR2M096-E	Telecentric CORE lens for 1" detectors, magnification 0.137 x, M42x1 FD=16
TCCR4M096-C	Telecentric CORE lens for 4/3" detectors, magnification 0.186 x, C-mount
TCCR4M096-F	Telecentric CORE lens for 4/3" detectors, magnification 0.186 x, F-mount
TCCR4M096-E	Telecentric CORE lens for 4/3" detectors, magnification 0.186 x, M42x1 FD=16



TCSM series
3D bi-telecentric lenses with Scheimpflug adjustment

TCSM096	3D bi-telecentric lens with Scheimpflug adjustment
---------	--



CMHOCR series
Clamping mechanics CORE series

CMHOCR096	Clamping mechanics for CORE telecentric lenses and illuminators Ø 96mm
-----------	--



CMPTCR series
Mounting plates CORE series

CMPTCR096	Mechanical components designed for CORE telecentric lenses and illuminators Ø 96mm
-----------	--