

# CMHO080

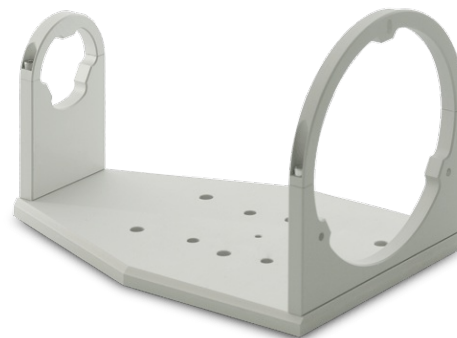
Clamping mechanics for TCxx072, TCxx080, LTCLHP080-X illuminators and PCxx030XS

## SPECIFICATIONS

Compatible products	TC23072, TCxx080, TCxMHR080-x, TC16M080-x, LTCLHP080-x, PCxx030XS
---------------------	---

### Mechanical specifications

Compatible teleplates (CMT)	080
Length (mm)	230.0
Width (mm)	153.0
Height (mm)	152.0
Optical axis height (mm)	80.0
Mass (g)	1050



## COMPATIBLE PRODUCTS

	TC series Bi-telecentric lenses for matrix detectors up to 2/3"
--	--

TC23072	Bi-telecentric lens for 2/3" detectors, magnification 0.122 x, C-mount
TC13080	Bi-telecentric lens for 1/3" detectors, magnification 0.059 x, C-mount
TC12080	Bi-telecentric lens for 1/2" detectors, magnification 0.080 x, C-mount
TC23080	Bi-telecentric lens for 2/3" detectors, magnification 0.110 x, C-mount

	TC2MHR and TC4MHR series High resolution telecentric lenses for large detectors up to 1.2"
--	---

TC2MHR080-C	High resolution telecentric lens for 1" detectors, magnification 0.160x, C-mount
TC2MHR080-F	High resolution telecentric lens for 1" detectors, magnification 0.160x, F-mount
TC2MHR080-E	High resolution telecentric lens for 1" detectors, magnification 0.160x, mount M42X1 FD=16
TC4MHR080-C	High resolution telecentric lens for 1.2" detectors, magnification 0.221x, C-mount
TC4MHR080-F	High resolution telecentric lens for 1.2" detectors, magnification 0.221x, F-mount
TC4MHR080-E	High resolution telecentric lens for 1.2" detectors, magnification 0.221x, mount M42X1 FD=16

	TC series Telecentric lenses for 35 mm and 4k/8k linescan cameras
--	--


TC16M080	Telecentric lens for 35 mm detectors, magnification 0.463 x, F-mount
TC16M080-Q	Telecentric lens for 35 mm detectors, magnification 0.463 x, mount M58x0.75 FD = 6.56

	TCCXQ series High resolution telecentric assembly with coaxial illumination
--	--

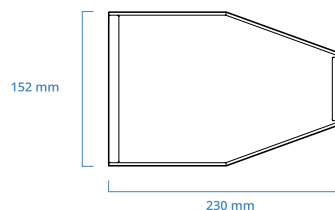
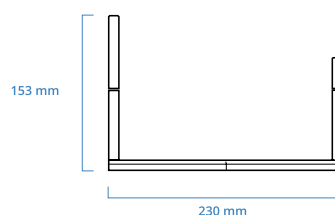
TCCXQ011-G	Telecentric assembly with coaxial illumination for 2/3" detectors, magnification 0.11x, green
TCCXQ011-W	Telecentric assembly with coaxial illumination for 2/3" detectors, magnification 0.11x, white

	LTCLHP series High-performance telecentric illuminators
--	--

LTCLHP080-R	Telecentric HP illuminator, beam diameter 100 mm, red
LTCLHP080-G	Telecentric HP illuminator, beam diameter 100 mm, green
LTCLHP080-B	Telecentric HP illuminator, beam diameter 100 mm, blue
LTCLHP080-W	Telecentric HP illuminator, beam diameter 100 mm, white

	PC series Pericentric lenses: 360° top and lateral view with just one camera
--	---

PC13030XS	Compact pericentric lens for 1/3" detectors
PC12030XS	Pericentric lens for 1/2" detectors
PC23030XS	Compact pericentric lens for 2/3" detectors





CMPT series  
Mounting plates

---

CMPT080

Mounting plate

---