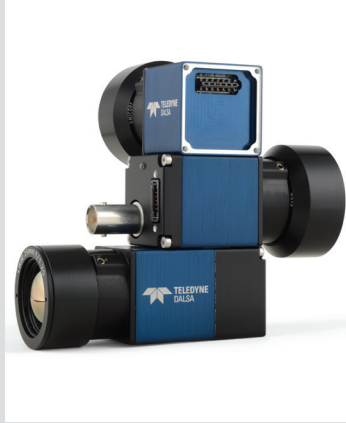


# CALIBIR™ 640 Series

Uncooled IR VGA Camera Core



### Key Features

- 640 x 480 VGA resolution
- 17  $\mu$ m square pixels
- 29 mm x 29 mm x 29 mm<sup>1</sup>
- Compact modular design
- Rapid image output
- Adaptive Contrast Enhancement
- Shutter-less operation
- Supports analog, digital and GigE output
- Built-in Pseudo-color for enhanced visualization
- Made in Canada

### Regulatory Compliance

- CE, FCC and RoHS (Pending)
- MIL-STD 810G Compliant
  - Shock and vibration
  - Thermal Shock
- Subject to Canadian Export Regulations. Calibr is categorized as a dual use item (group 1) under the Wassenaar Arrangement

## Great flexibility, Small size

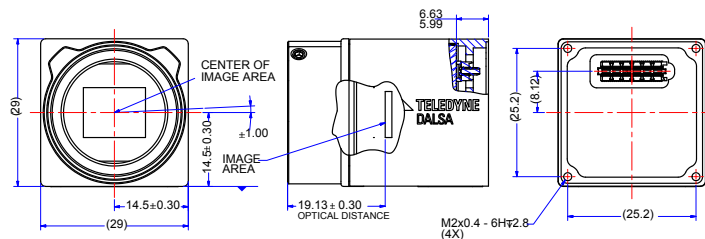
The Calibr uncooled Long Wave Infrared camera platform offers outstanding shutterless imaging performance and is optimized for Size, Weight and Power (SWAP). As a first member of the Calibr family, the Calibr 640 series introduces an easy-to-use modular design with a 29 mm x 29 mm x 29 mm camera core that can be integrated into tight spaces for compact solutions. The Calibr 640 series features shutterless operation and rapid image output on power up while delivering uniform response over the entire operating temperature range. As a result, the Calibr cameras can operate uninterrupted without the need for recalibration.

For greater flexibility, the Calibr 640 series microbolometer-based platform supports a variety of industry standard video formats, physical interconnects, LWIR lenses and state-of-the-art on-board processing engine. The Calibr 640 series is ideal for a wide range of imaging applications requiring long wave IR detectors in the field of surveillance and monitoring, defense and security, maintenance and general machine vision.

### General Specifications

Resolution	640 (H) x 480 (V) pixels
Frame Rate	30 fps; 50 <sup>2</sup> fps (full frame size)
Pixel Size	17 $\mu$ m
Responsivity	7 mV/K
NETD	$\leq 70$ mK; F/1.0, at 30 fps, high gain mode
Lens Options	11 lens options: HFOV: 6.2° to 90°
Size	29 mm x 29 mm x 29 mm
Mass	38 g (without lens)
Operating Temp	-40°C to 60°C
I/O Options	Analog: NTSAC, PAL, parallel digital <sup>2</sup> , GigE Vision

### Principle Dimensions (M25 Only)

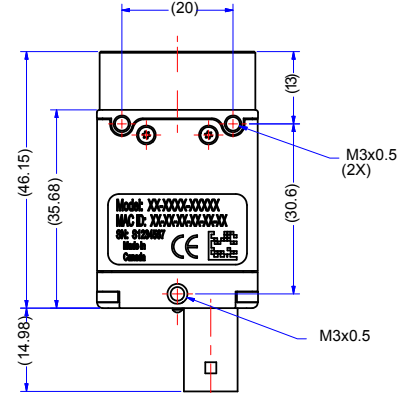
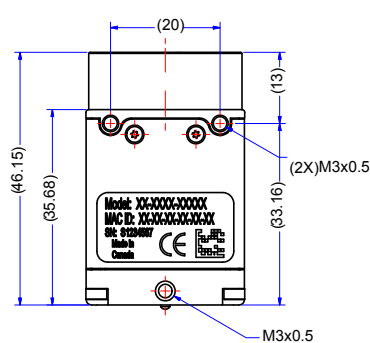
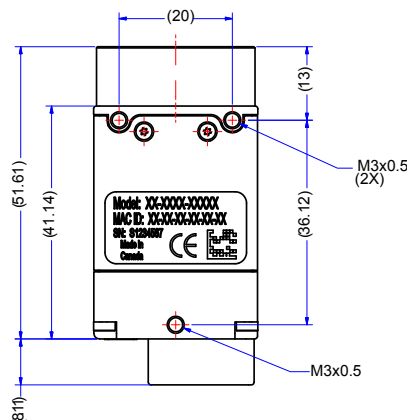
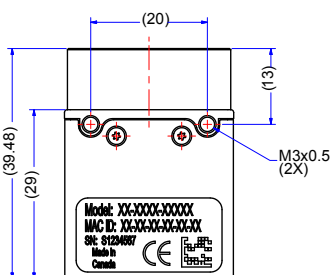


Calibr 640 Core

Calibr 640 GigE

Calibr 640 AS

Calibr 640 AB



FEATURE	CALIBIR 640 CORE	CALIBIR 640 GIGE	CALIBIR 640 AS	CALIBIR 640 AB
				
<b>Mechanical Interface</b>				
Camera body (W x H x L)	29 mm x 29 mm x 29 mm (body without lens mount)			
Lens Mount	M34 & M25			
<b>Dimensions</b>				
With M25 lens Mount (W x H x L)	29 mm x 29 mm x 46.15 mm	29 mm x 29 mm x 59.72 mm	29 mm x 29 mm x 46.15 mm	29 mm x 29 mm x 61.13 mm
With M34 lens Mount (W x H x L)	37 mm x 37 mm x 37.6 mm	37 mm x 37 mm x 57.85 mm	37 mm x 37 mm x 44.28 mm	37 mm x 37 mm x 59.26 mm
Mass	38 g (without lens mount)		58 g (without lens mount)	
Power connector	via SAMTEC® 60-pin connector	via 10-pin connector, or RJ-45 in PoE mode	via 10-pin connector	via 10-pin connector
Interface Connector	SAMTEC® connector SS4-30-3.00-L-D-K-TR 60-pin	RJ-45 with locking screws	1-pin on SAMTEC® 10-pin connector	BNC
<b>Sensor Information</b>				
Focal Plane Array	VGA, 640 (H) x 480 (V)			
Spectral Response	8-14 µm (LWIR)			
Pixel Pitch	17 µm			
<b>Camera NETD</b>				
High Gain <sup>1</sup>	70 mK @ f/1.0, 300 K, 30 Hz			
Low Gain (default)	100 mK @ f/1.0, 300 K, 30 Hz			
Typical Response	20 DN in 14-bit/image (unstretched)			
Time to 1 <sup>st</sup> image	<1.7s (core)			
<b>Electrical Interface</b>				
Input Voltage	3.3 V DC	12/24 V DC (min 9 V, max 57 V)	12/24 V DC (min 9 V, max 57 V)	12/24 V DC (min 9 V, max 57 V)
Power Consumption (max)	~2.5 W	3.7 W	3.5 W	
<b>Environmental Conditions</b>				
Operating Temperature	-40°C to 60°C (Ambient Temperature)			
Operating Relative Humidity	20% to 80% non-condensing			

SUPPORTED LENSES											
HFOV(deg)	90°	73.2°	42.1°	36°	24.2°	16.9°	12.4°	10.3°	9.6°	8.2°	6.2°
Focal Length	7.5 mm	8.52 mm	14.2 mm	16.8 mm	25 mm	35 mm	50 mm	60.1 mm	65 mm	75 mm	100 mm
F/#	1.4	1.24	1.24	1.24	1.2	1.14	1.2	1.25	1.2	1.13	1.5
Lens Mount	M34	M25	M25	M25	M25	M25	M34	M34	M34	M34	M34
Lens Weight	45 g	34 g	25 g	23.6 g	40 g	45.9 g	238 g	218 g	490 g	274 g	369 g
Lens ID	A2	B1	R1	D1	F1	H1	I2	J2	K2	L2	N2

**Notes:**

1 Camera core only without lens

**Authorized Distributor:**



Your single source for Imaging Solutions

Ph. 510.657.4000

info@uniforcesales.com

www.uniforcesales.com

**Europe**

Krailling, Germany

+49 89-89-54-57-3-80

sales.europe@teledynedalsa.com

**Asia Pacific**

Tokyo, Japan

+81 3-5960-6353

sales.asia@teledynedalsa.com

Calibir P/N:

IRACUV0-032

LENS ID:  
See Lens table

GV=GigE  
NI=AS  
N2=AB  
00=Core

Teledyne DALSA has its corporate offices in Waterloo, Canada

Teledyne DALSA reserves the right to make changes at any time without notice. Teledyne DALSA © 2016.

